

MARYLAND

PUBLIC SCHOOL FACILITIES

Legend

- County Boundary
- Roadways
- Waterways

High Schools

- 1 Kent Island High School
- 2 Queen Anne's County High School

Middle Schools

- 3 Centreville Middle School
- 4 Matapeake Middle School
- 5 Sudlersville Middle School
- 6 Stevensville Middle School

Elementary Schools

- 7 Bayside Elementary School
- 8 Centreville Elementary School
- 9 Church Hill Elementary School
- 10 Grasonville Elementary School
- 11 Kennard Elementary School
- 12 Kent Island Elementary School
- 13 Matapeake Elementary School
- 14 Sudlersville Elementary School

Proposed Middle School

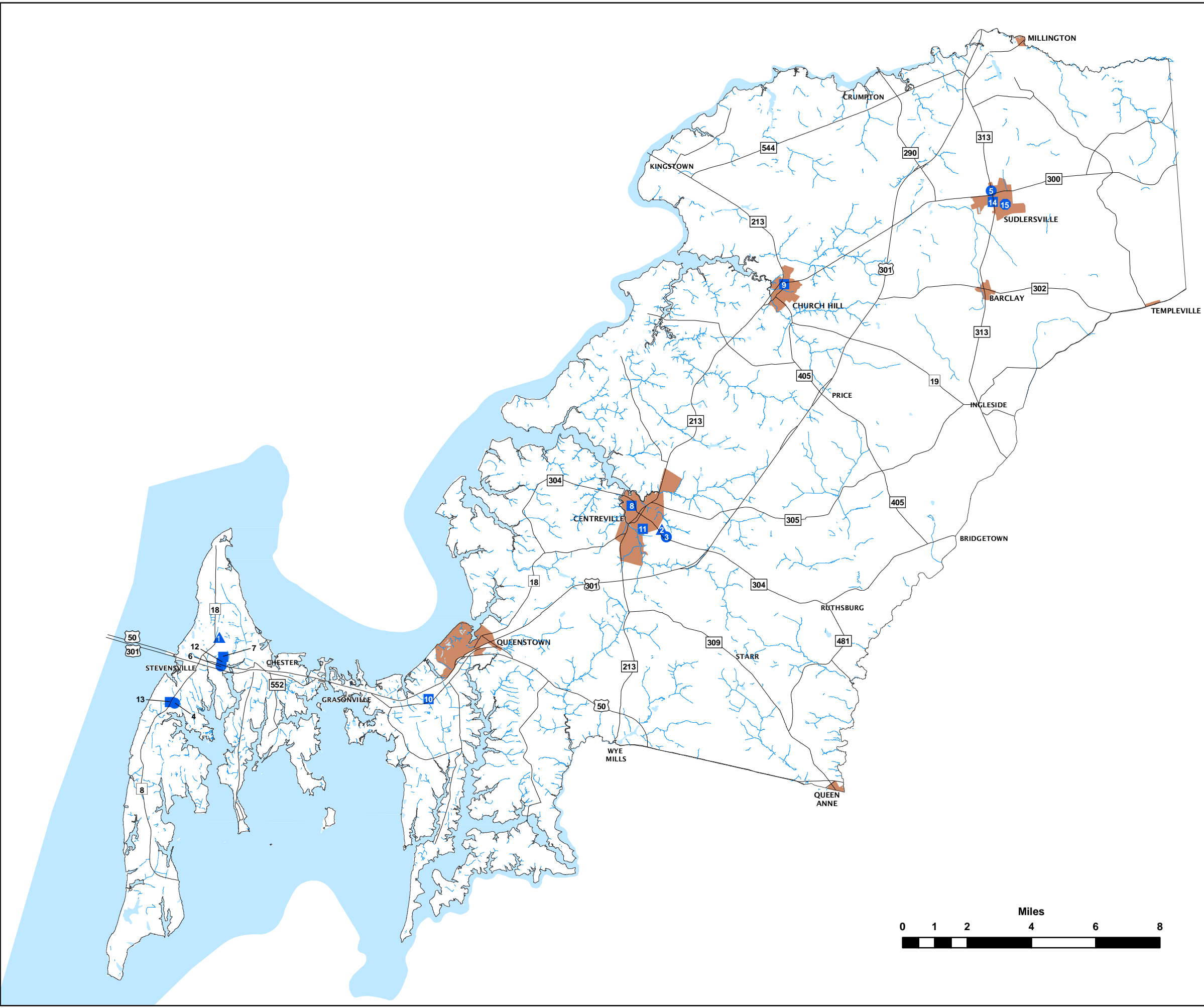
- 15 Sudlersville Middle School Replacement

Incorporated Towns



SOURCE: QUEEN ANNE'S COUNTY DEPARTMENT
OF LAND USE, GROWTH MANAGEMENT &
ENVIRONMENT.

MARCH 2010



QUEEN ANNE'S COUNTY PARK AND RECREATIONAL FACILITIES

Legend

-  Community Parks
-  Countywide Special Use
-  Neighborhood Parks
-  Private Parks
-  State Facilities
-  Town Parks
-  Water Access
-  Existing Trails
-  Proposed Trails
-  Water Trails
-  Existing Greenway *
-  Potential Greenway *

* GREENWAY TRAIL DATA WAS PROVIDED BY THE MARYLAND DEPARTMENT OF NATURAL RESOURCES. GREENWAY TRAILS WERE ADDED WHERE THERE WAS NO OVERLAP WITH QUEEN ANNE'S COUNTY TRAILS (EXISTING AND PROPOSED TRAILS).

SOURCE: QUEEN ANNE'S COUNTY DEPARTMENT OF LAND USE, GROWTH MANAGEMENT AND ENVIRONMENT, PARKS AND RECREATION AND MARYLAND DEPARTMENT OF NATURAL RESOURCES

MARCH 2010

MAP CF-2




Neighborhood Parks

-  1 Crumpton Park
-  2 Kingstown Park
-  3 Mowbray Park
-  4 Pinkney Park
-  5 Long Point Park
-  6 Ewing Pond Park

Community Parks

-  7 Round Top Park
-  8 Grasonville Park
-  9 Roosevelt Park
-  10 4-H Park
-  11 Sudlersville Park
-  12 Batts Neck Park
-  13 Old Love Point Park
-  14 Route 18 Park
-  15 Church Hill Park
-  16 Whitmarsh Park
-  17 Davidson Park



Town Parks

-  18 Mill Stream Park
-  19 Gravel Run Park
-  20 Queenstown Park

Countywide Special Use

-  21 Terrapin Nature Area
-  22 Blue Heron Golf Course
-  23 Conquest Preserve
-  24 Chesapeake Exploration Center
-  25 Cross Island Trail
-  26 Greenberg Property/Equestrian Trail
-  27 Stevensville Pocket Park
-  28 Slaby Property
-  29 Ferry Point Park
-  30 Matapeake Clubhouse and Public Beach
-  31 Matapeake Park
-  32 Kudner Property
-  33 Chesapeake College/YMCA Pool
-  34 Island Dog Park

Privately Owned Parks

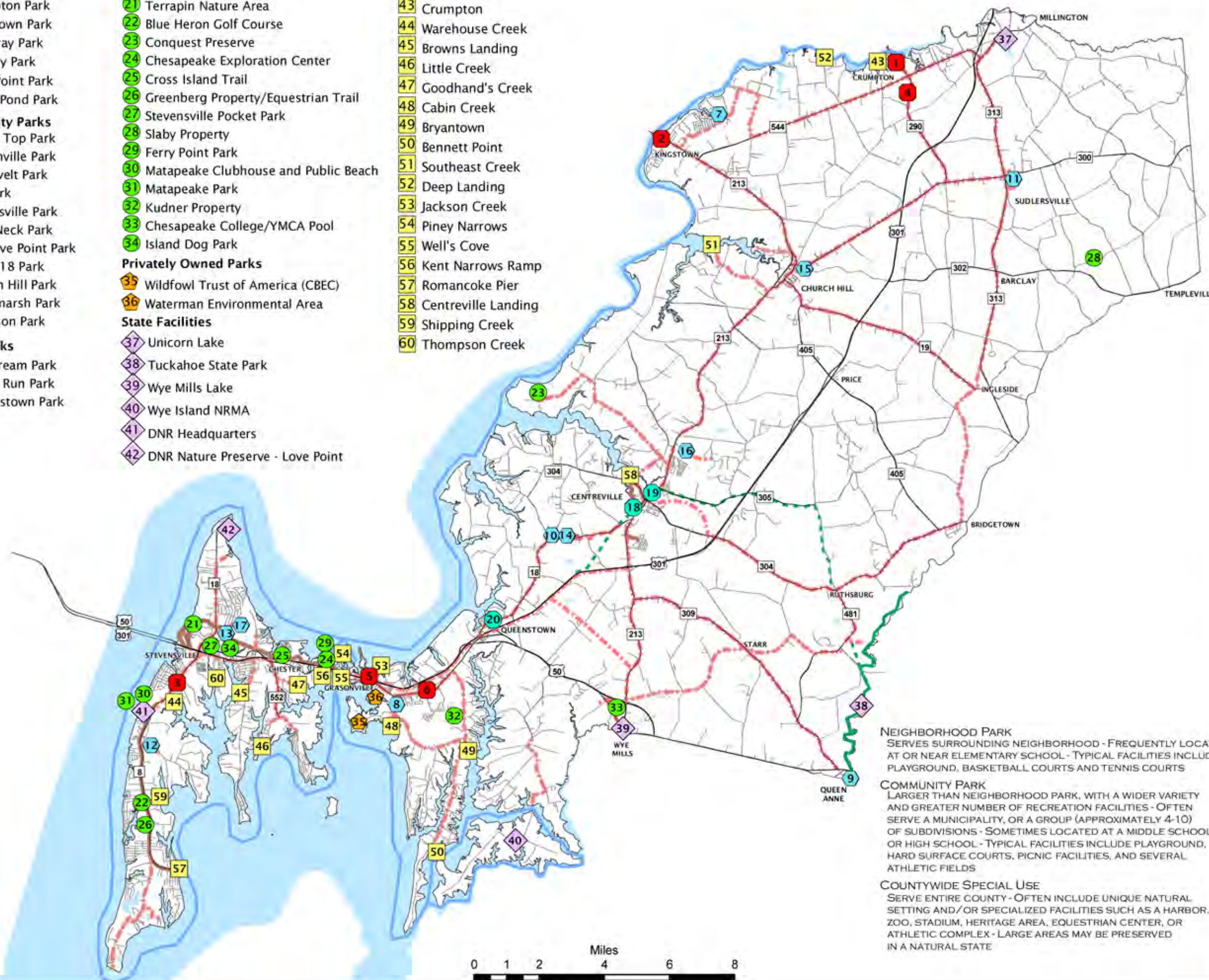
-  35 Wildfowl Trust of America (CBEC)
-  36 Waterman Environmental Area

State Facilities

-  37 Unicorn Lake
-  38 Tuckahoe State Park
-  39 Wye Mills Lake
-  40 Wye Island NRMA
-  41 DNR Headquarters
-  42 DNR Nature Preserve - Love Point

Public Landings

-  43 Crumpton
-  44 Warehouse Creek
-  45 Browns Landing
-  46 Little Creek
-  47 Goodhand's Creek
-  48 Cabin Creek
-  49 Bryantown
-  50 Bennett Point
-  51 Southeast Creek
-  52 Deep Landing
-  53 Jackson Creek
-  54 Piney Narrows
-  55 Well's Cove
-  56 Kent Narrows Ramp
-  57 Romancove Pier
-  58 Centreville Landing
-  59 Shipping Creek
-  60 Thompson Creek



NEIGHBORHOOD PARK

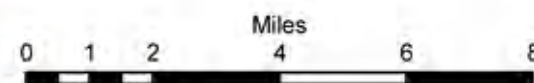
SERVES SURROUNDING NEIGHBORHOOD - FREQUENTLY LOCATED AT OR NEAR ELEMENTARY SCHOOL - TYPICAL FACILITIES INCLUDE PLAYGROUND, BASKETBALL COURTS AND TENNIS COURTS

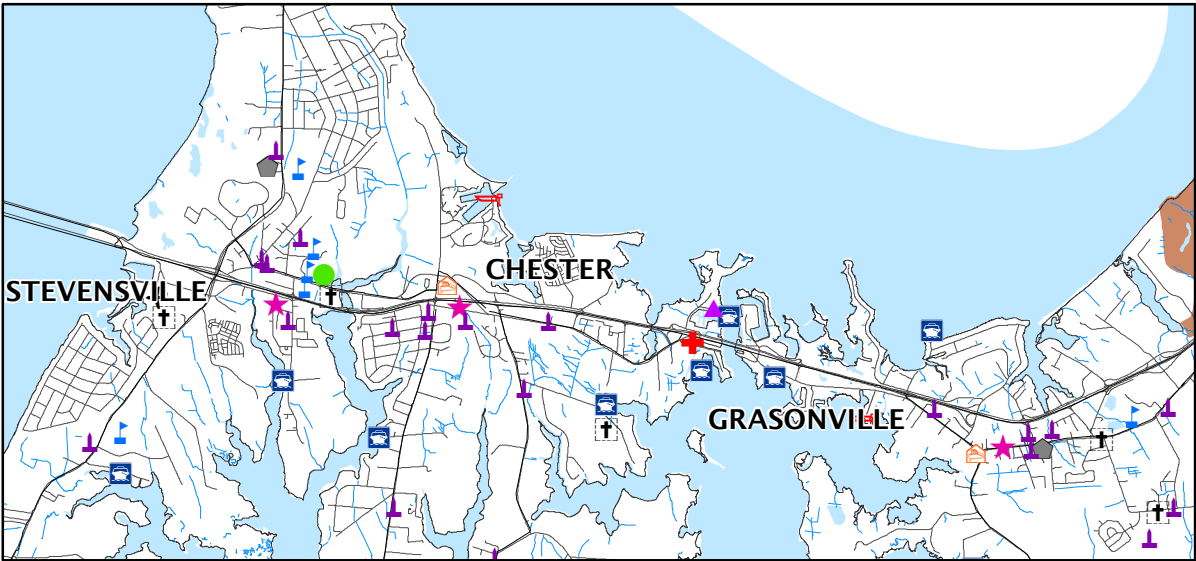
COMMUNITY PARK

LARGER THAN NEIGHBORHOOD PARK, WITH A WIDER VARIETY AND GREATER NUMBER OF RECREATION FACILITIES - OFTEN SERVE A MUNICIPALITY, OR A GROUP (APPROXIMATELY 4-10) OF SUBDIVISIONS - SOMETIMES LOCATED AT A MIDDLE SCHOOL OR HIGH SCHOOL - TYPICAL FACILITIES INCLUDE PLAYGROUND, HARD SURFACE COURTS, PICNIC FACILITIES, AND SEVERAL ATHLETIC FIELDS

COUNTYWIDE SPECIAL USE

SERVE ENTIRE COUNTY - OFTEN INCLUDE UNIQUE NATURAL SETTING AND/OR SPECIALIZED FACILITIES SUCH AS A HARBOR, ZOO, STADIUM, HERITAGE AREA, EQUESTRIAN CENTER, OR ATHLETIC COMPLEX - LARGE AREAS MAY BE PRESERVED IN A NATURAL STATE





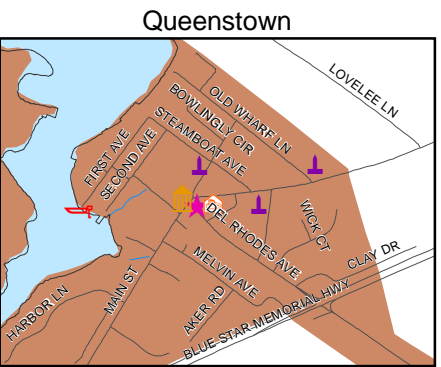
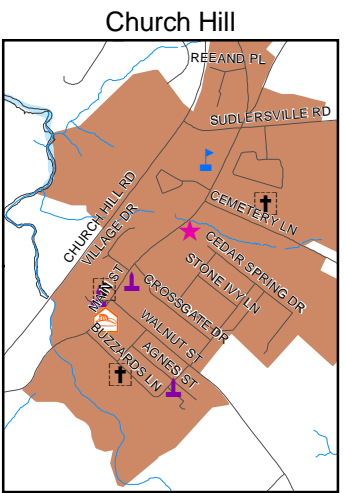
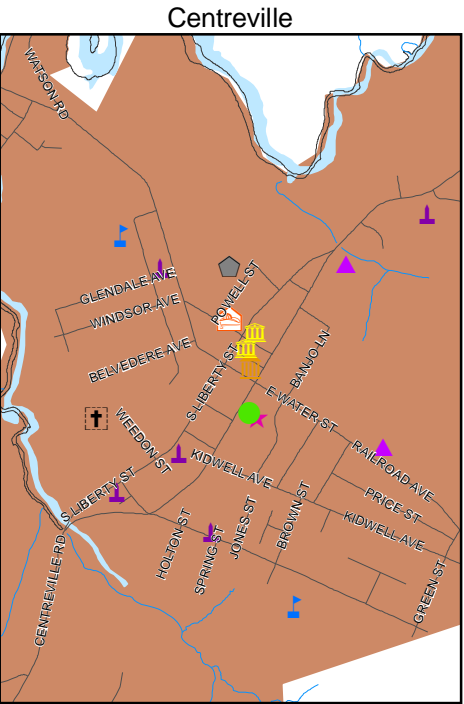
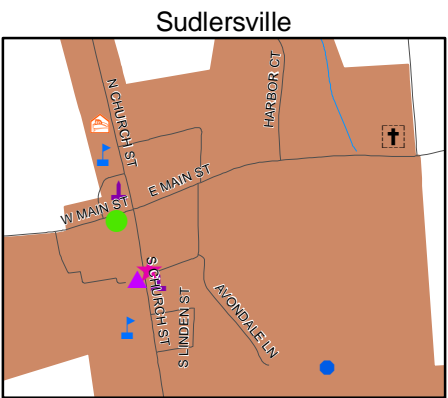
COMMUNITY FACILITIES

Legend

- County Boundary
- Roadways
- Waterways
- Incorporated Towns

Points of Interest

- Cemetery
- Church
- Library
- Senior Center
- School
- College
- Airport
- Public Landing
- Fire Boat
- Fire Station
- Medic Station
- Police
- Post Office
- Courthouse
- Town Hall
- Proposed Sudlersville Middle School Replacement



SOURCE: QUEEN ANNE'S COUNTY DEPARTMENT
OF LAND USE, GROWTH MANAGEMENT &
ENVIRONMENT.

MARCH 2010



MARYLAND

SANITARY SEWER
SERVICE AREAS

Legend

County Boundary

Roadways

Parcels

County / Town Planning Areas

Water

Sewer Plants and Stations

Collection Station

Lagoon

Pump Station

Private System

Proposed Collection Station

Proposed Pump Station

Waste Water Treatment Plant

Outfall Locations

Sewer Service Area Designation

S1 - Current Service Areas (2009)

S2 - Service in the next 1-3 years ('06-'09)

S3 - Service in the next 4 - 10 years ('10-'16)

S4- Service in the next 11-20 years ('17-'26)

S5 - Service beyond 20 years ('27+)

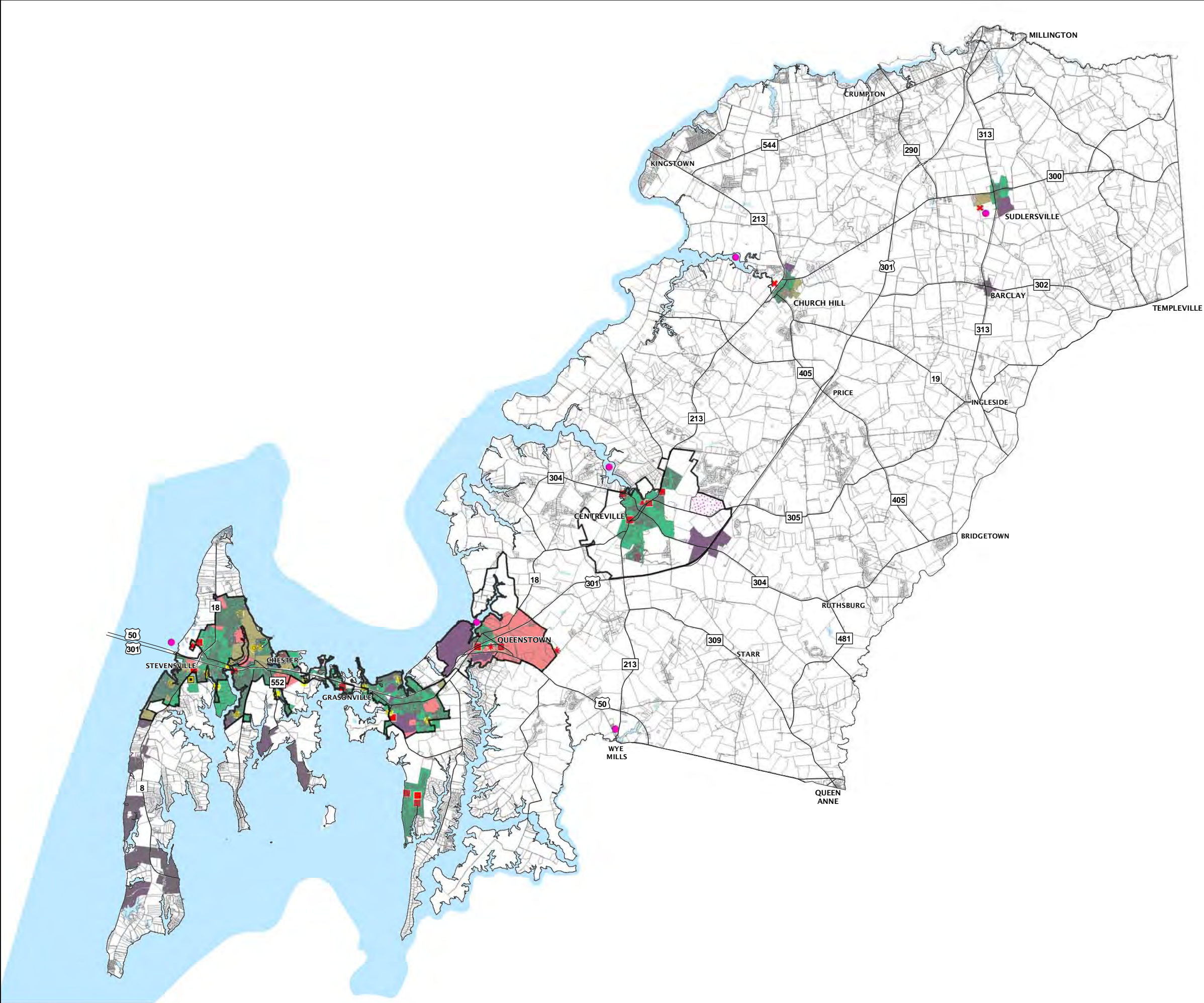
Effluent Spray Field

BASED ON QAC PROVIDED DATASETS AS OF MAY 2009. INCLUDES 2006 COMPREHENSIVE WATER AND SEWERAGE PLAN AMENDMENTS, AS WELL AS AMENDMENTS TO SEWER SERVICE AREAS THROUGH MAY 2009.

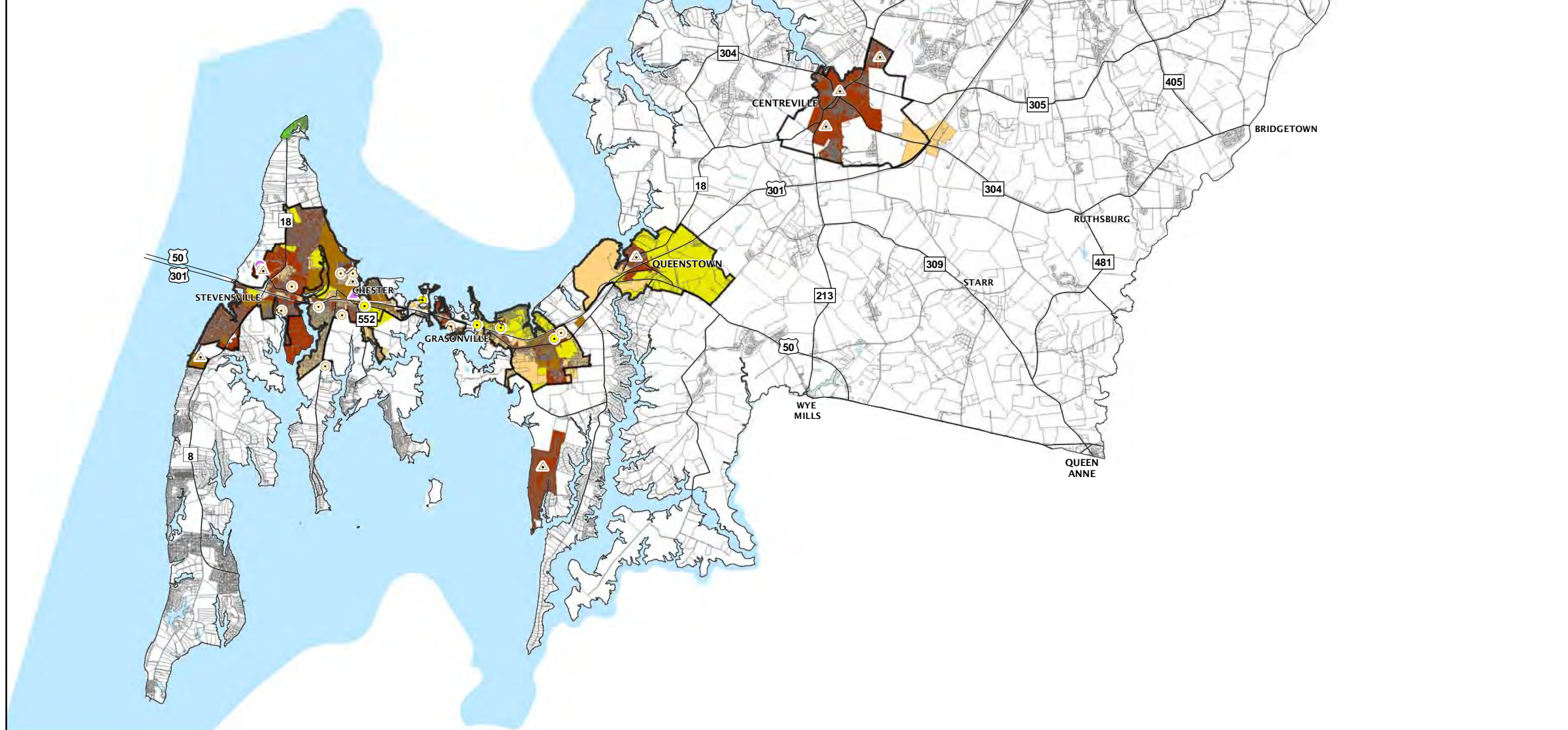
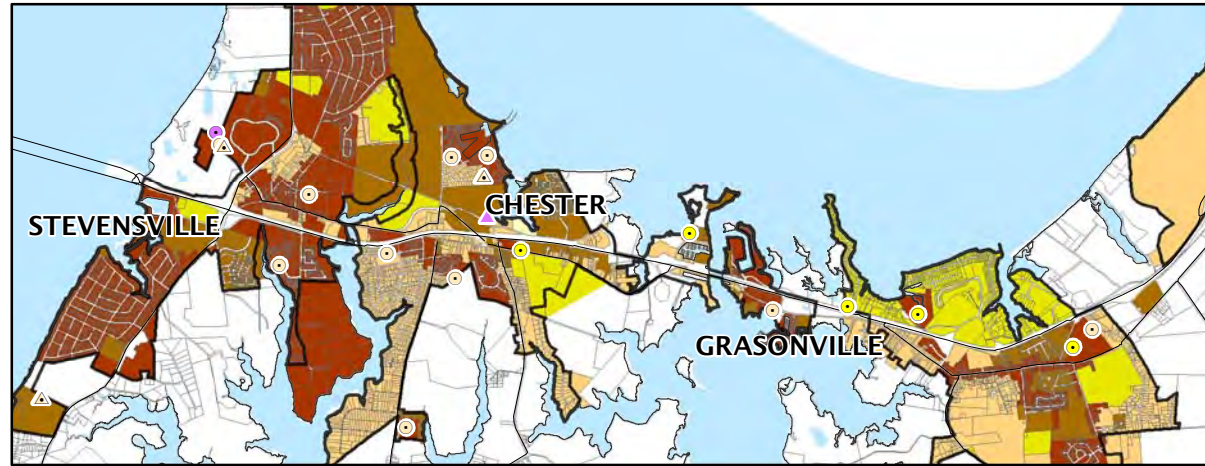


SOURCE: QUEEN ANNE'S COUNTY DEPARTMENT OF PUBLIC WORKS, DEPARTMENT OF LAND USE, GROWTH MANAGEMENT & ENVIRONMENT.

MARCH 2010



Stevensville / Chester / Grasonville



QUEEN ANNE'S COUNTY

COMPREHENSIVE PLAN UPDATE

MARYLAND

WATER SERVICE AREAS

Legend

- County / Town Planning Areas
- County Boundary
- Roadways
- Parcels
- Water

Water Facilities

- Water Treatment Plant
- Proposed Water Treatment Plant
- Private Water System
- Water Tower
- Proposed Water Tower

Water Service Area Designations

- W1 - Current Service Areas (2009)
- W2 - Service in the next 1 - 3 years ('06-'09)
- W3 - Service in the next 4 - 10 years ('10-'16)
- W4 - Service in the next 11-20 years ('17-'26)
- W5 - Service beyond 20 years ('27+)
- W6 - No Planned Service
- W7 - On site solution

NOTES:

W7 - ON-SITE SOLUTION
IT IS ANTICIPATED THAT INDIVIDUAL PROPERTY OWNERS / DEVELOPERS WILL PROVIDE THEIR OWN SOLUTION. SOURCE: 2006 COMPREHENSIVE WATER AND SEWERAGE PLAN.

BASED ON QAC PROVIDED DATASETS AS OF MAY 2009. INCLUDES 2006 COMPREHENSIVE WATER AND SEWERAGE PLAN DATA AS WELL AS AMENDMENTS TO WATER SERVICE AREAS THROUGH MAY 2009.



SOURCE: QUEEN ANNE'S COUNTY DEPARTMENT OF PUBLIC WORKS, DEPARTMENT OF LAND USE, GROWTH MANAGEMENT & ENVIRONMENT.

MARCH 2010



MARYLAND

FIRE DISTRICTS

Legend

County Boundary

Roadways

Waterways

Fire Station

County / Town Planning Areas

Incorporated Towns

Fire Districts

Co. 1 KENT ISLAND

Co. 2 GRASONVILLE

Co. 3 QUEENSTOWN

Co. 4 CENTREVILLE

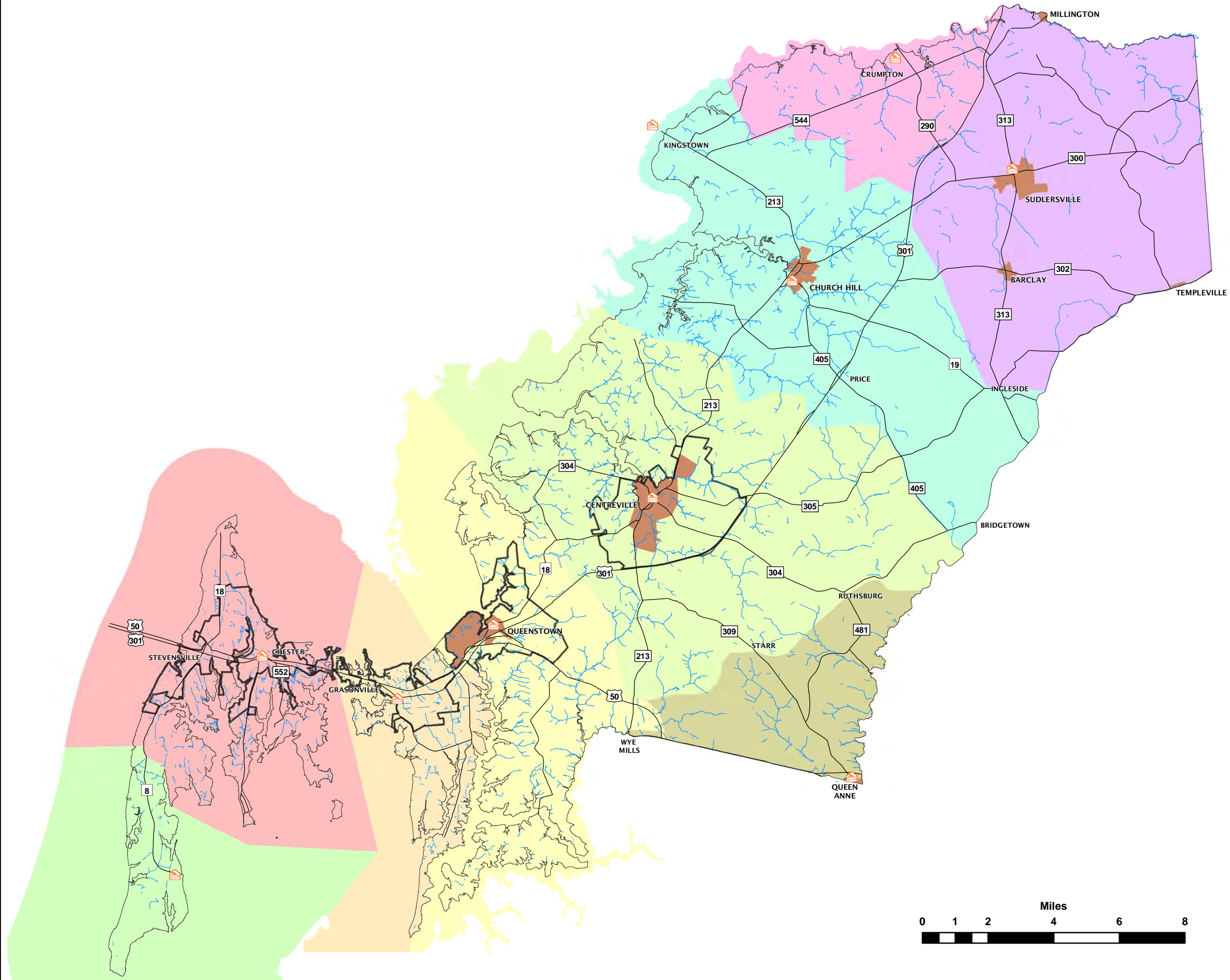
Co. 5 CHURCH HILL

Co. 6 SUDLERSVILLE

Co. 7 CRUMPTON

Co. 8 QUEEN ANNE / HILLSBORO

Co. 9 ROMANCOKE



SOURCE: QUEEN ANNE'S COUNTY DEPARTMENT OF EMERGENCY SERVICES AND LAND USE, GROWTH MANAGEMENT & ENVIRONMENT, AND MARYLAND DEPARTMENT OF PLANNING.

MARCH 2010



QUEEN ANNE'S COUNTY COMPREHENSIVE PLAN UPDATE

MARYLAND

COUNTY COMMISSIONER AND ELECTED SCHOOL BOARD DISTRICTS

Legend

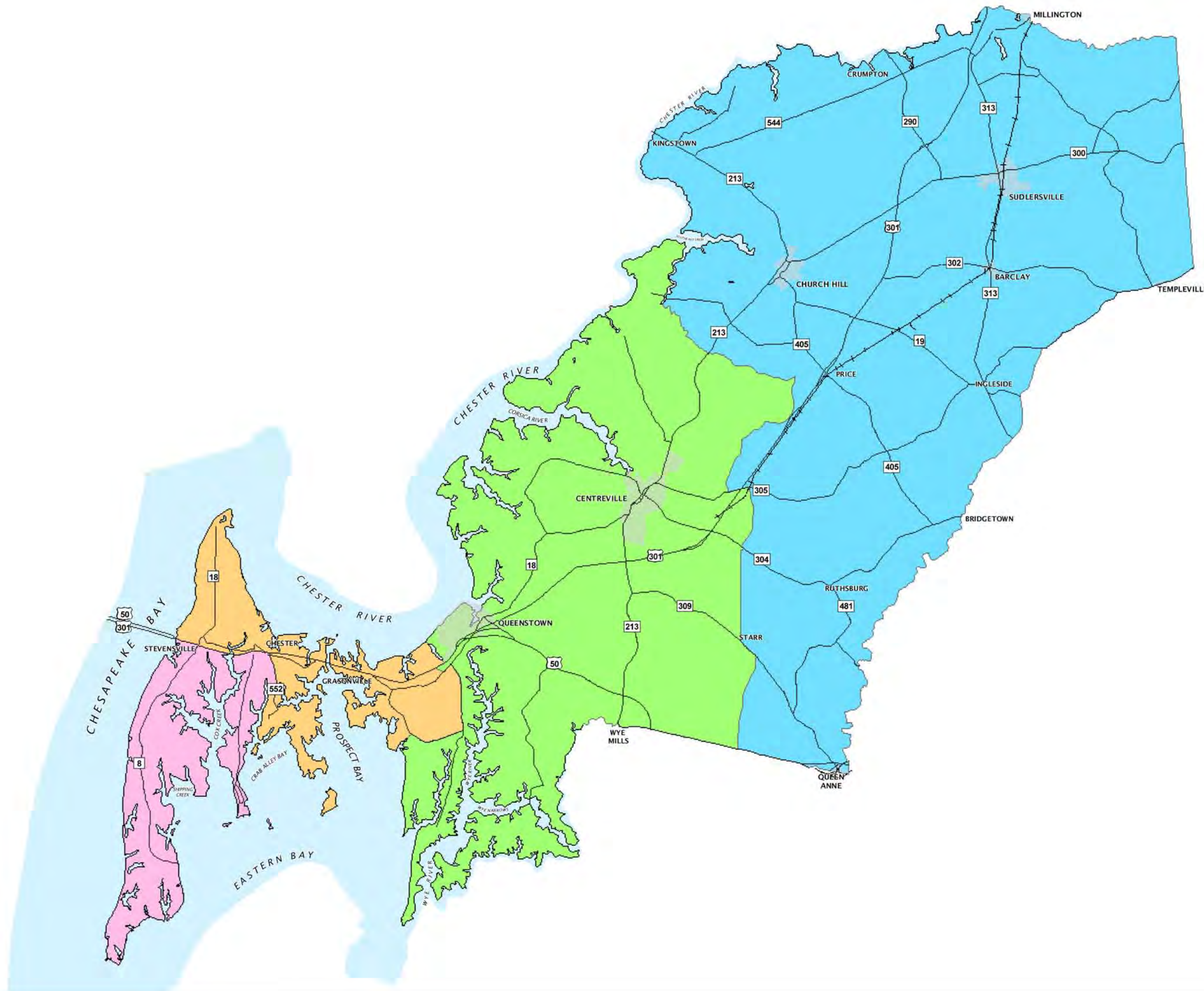
County Commissioner/
Elected School Board Districts

- 1
- 2
- 3
- 4

Roadways

Railroad

Incorporated Towns



SOURCE: QUEEN ANNE'S COUNTY DEPARTMENT
OF LAND USE, GROWTH MANAGEMENT AND
ENVIRONMENT, PARKS AND RECREATION AND
MARYLAND DEPARTMENT OF NATURAL RESOURCES.

JULY 2010



MAP CF-7

MARYLAND

ELECTION DISTRICTS

Legend

Election Districts

1 - Sudlersville

2 - Church Hill

3 - Centreville

4 - Kent Island

5 - Grasonville

6 - Queen Anne

7 - Crumpton/Chestertown

Election District Precincts*

County Boundary

County / Town Planning Areas

Incorporated Towns

Water

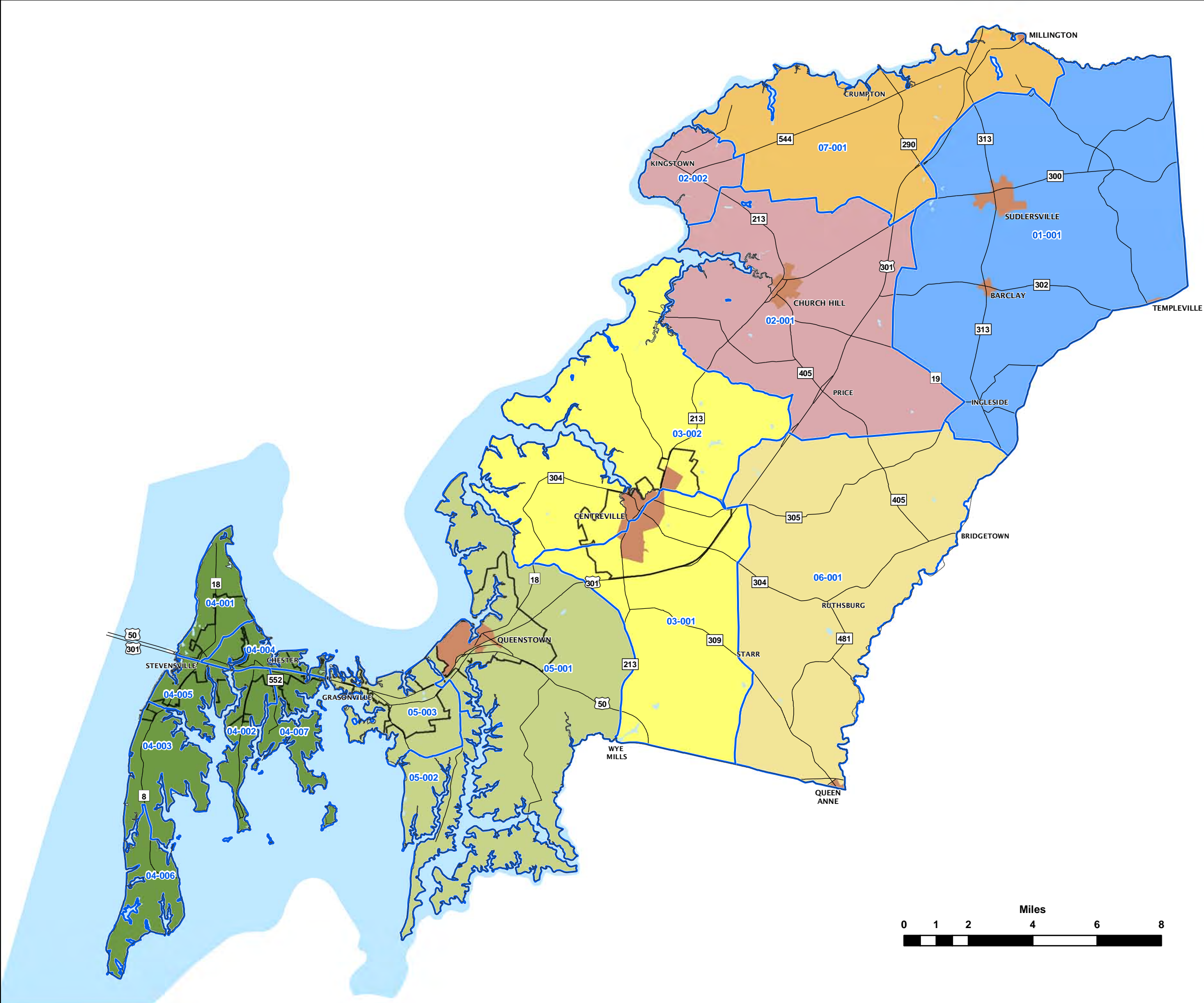
Roadways

*NOTE:
XX-000 ARE ELECTION PRECINCT LABELS WHERE
XX = ELECTION DISTRICT AND
000 = ELECTION PRECINCT



SOURCE: QUEEN ANNE'S COUNTY DEPARTMENT
OF EMERGENCY SERVICES AND LAND USE,
GROWTH MANAGEMENT & ENVIRONMENT, AND
MARYLAND DEPARTMENT OF PLANNING.

JUNE 2010



MARYLAND

ROADWAY
FUNCTIONAL
CLASSIFICATION

Legend

- County Boundary
- Railways
- Waterways
- County Ride Stops
- Local Roadways
- Minor Arterial
- Minor Collector
- Major Arterial
- Major Collector
- Airport Runway
- Chesapeake Country Scenic Byway
- Incorporated Towns

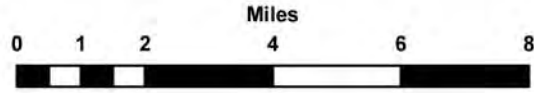
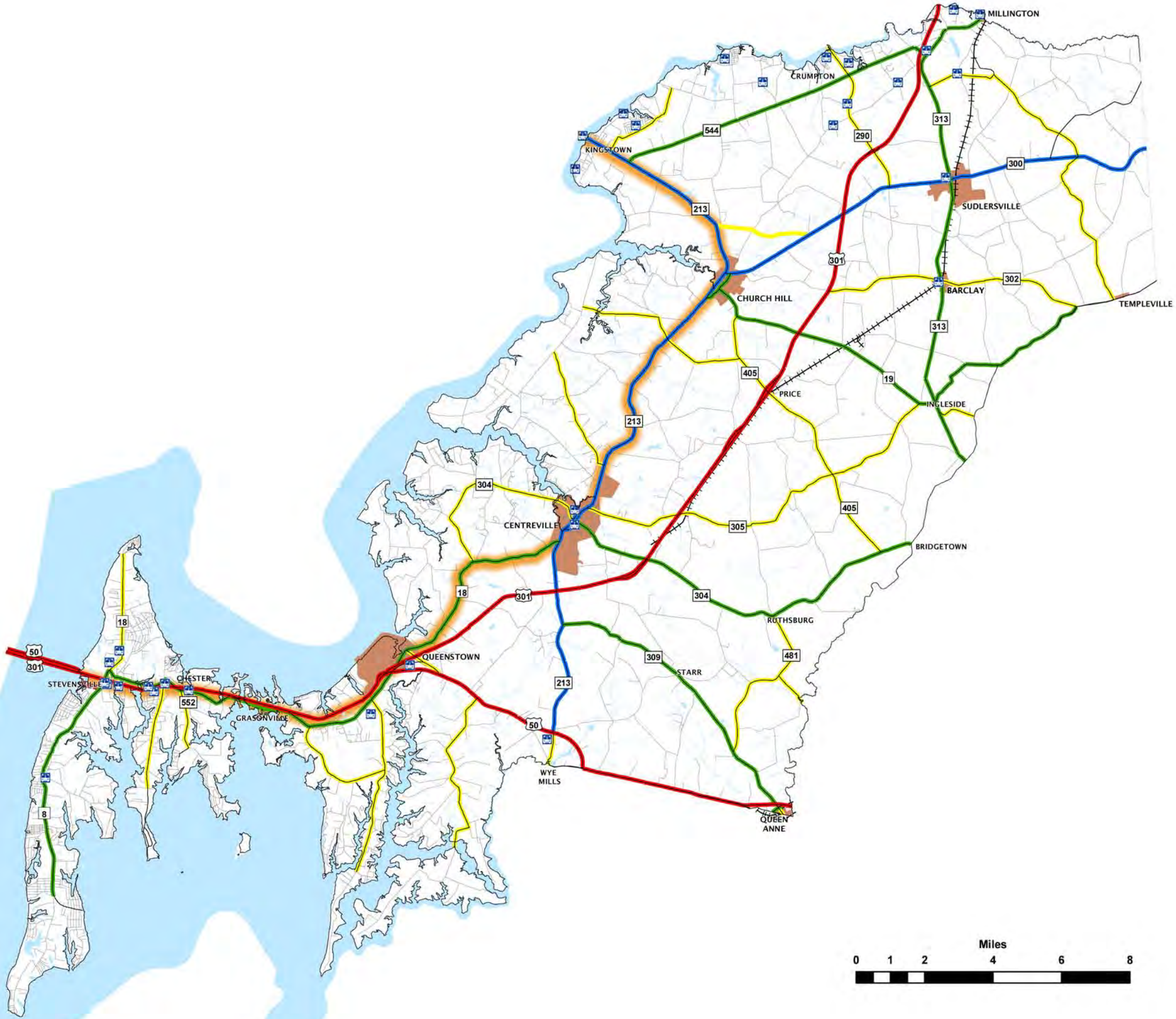
NOTES: FUNCTIONAL CLASSIFICATION BASED ON QUEEN ANNE'S COUNTY DEFINITIONS.

INCORPORATED TOWNS ARE ALSO PRIORITY FUNDING AREAS (PFAS).



SOURCE: QUEEN ANNE'S COUNTY DEPARTMENT OF PUBLIC WORKS, DEPARTMENT OF LAND USE, GROWTH MANAGEMENT & ENVIRONMENT.

MARCH 2010



MARYLAND

AVERAGE DAILY TRAFFIC

Legend

-  US Highway
-  State Highway
-  Permanent Traffic Counter Location
-  Permanent Traffic Counter With No Data Available
-  Toll Station Location

The information in these maps is provided as a public service by the Maryland State Highway Administration (MSHA).

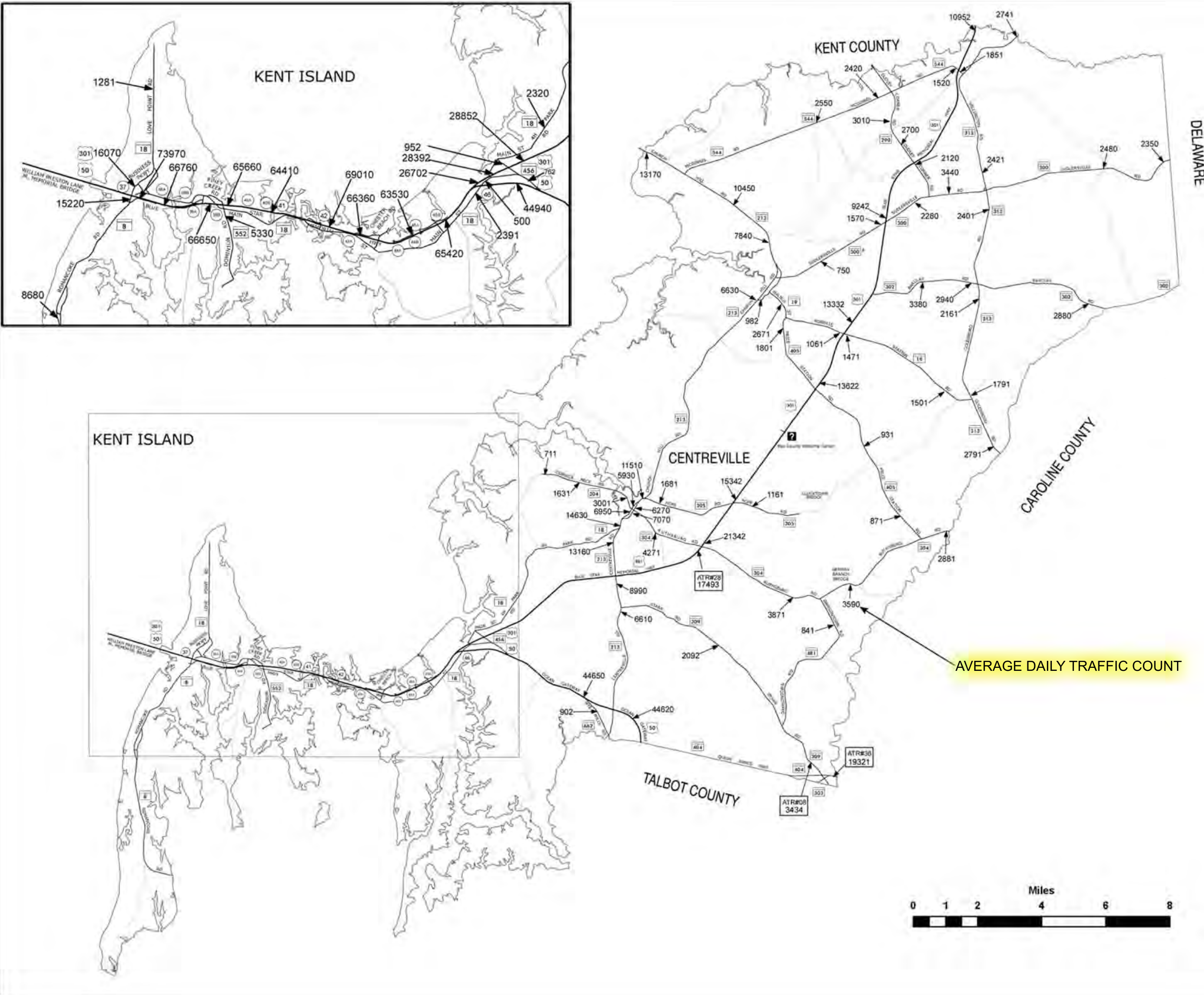
NOTICE

Traffic Count Figures are estimates. The traffic count estimates are derived by taking 48 hour machine count data and applying factors from permanent count stations. Restriction of Liability. SSHA makes no claims, promises or guarantees about the accuracy, completeness, or adequacy of the contents of these maps and expressly disclaims liability for any errors and omissions in the contents of these documents.



QUEEN ANNE'S COUNTY
TRAFFIC VOLUME MAP
2008
ANNUAL AVERAGE DAILY TRAFFIC
Prepared by the
Maryland Department of Transportation
STATE HIGHWAY ADMINISTRATION
HIGHWAY INFORMATION SERVICES DIVISION

MARCH 2010



MARYLAND

**PLANNED
TRANSPORTATION
IMPROVEMENTS**

Legend

- County Boundary
- Local Roadways
- Railways
- Waterways
- County Ride Stops
- Airport Runway
- Incorporated Towns
- Chesapeake Country Scenic Byway
- Existing Blinking Lights

Infrastructure Improvements

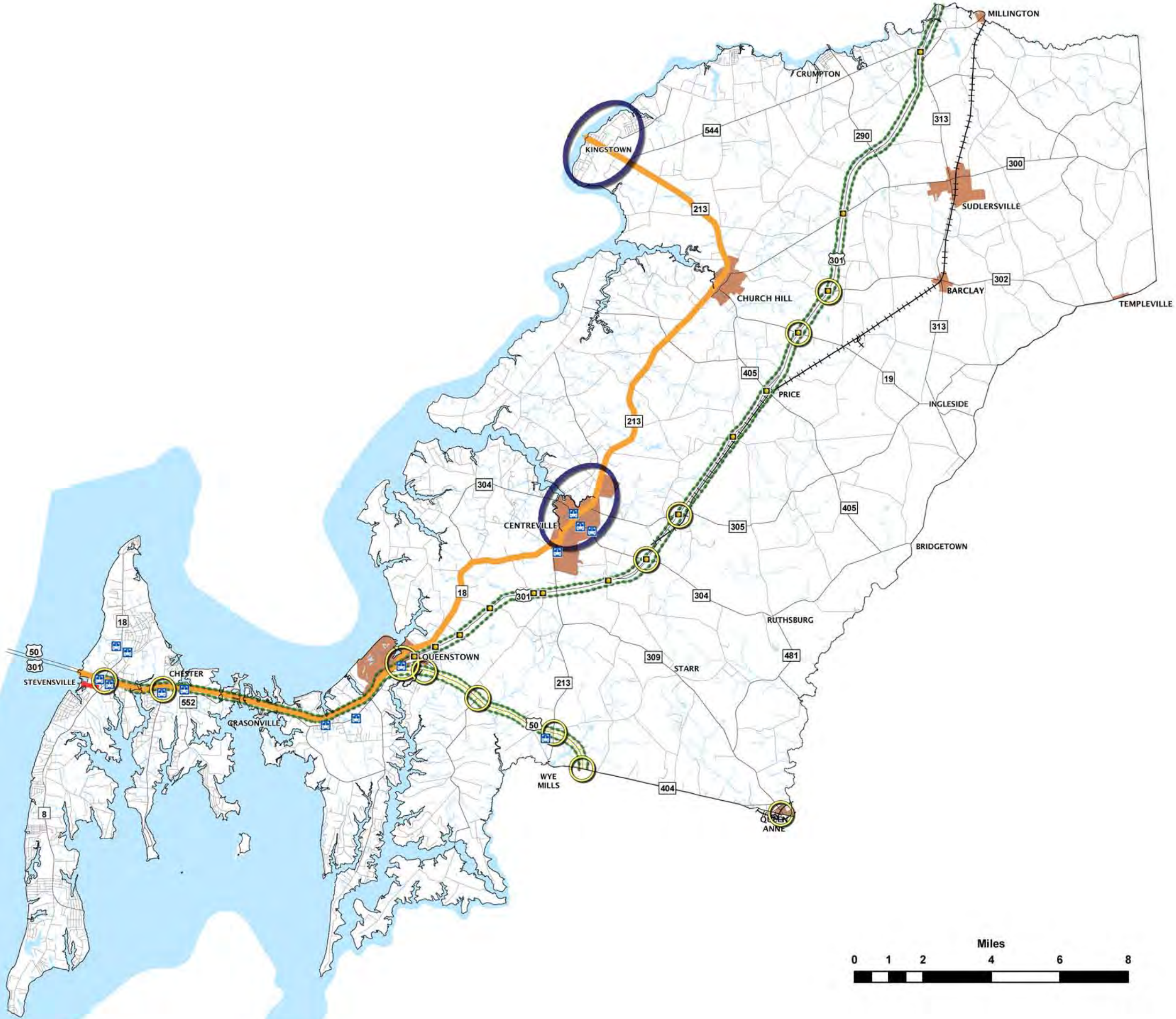
- Route 50 - Limited/Controlled Access Highway
- Potential Intersection Improvements
- Alternate Route Boulevard
- Scenic Corridor

SCENIC CORRIDORS ARE DEFINED AS A ROADWAY USED TO CONNECT OR REACH POINTS OF DESTINATION LOCALLY AND REGIONALLY VIEWED AS HAVING SCENIC, CULTURAL AND OR HERITAGE VALUES TO WHICH MAY CONTAIN LAND USE AND ENVIRONMENTAL DIVERSITY, AND IS USED TO PROMOTE THE REGION'S NATURAL BEAUTY.



SOURCE: QUEEN ANNE'S COUNTY DEPARTMENT OF PUBLIC WORKS, DEPARTMENT OF LAND USE, GROWTH MANAGEMENT & ENVIRONMENT.

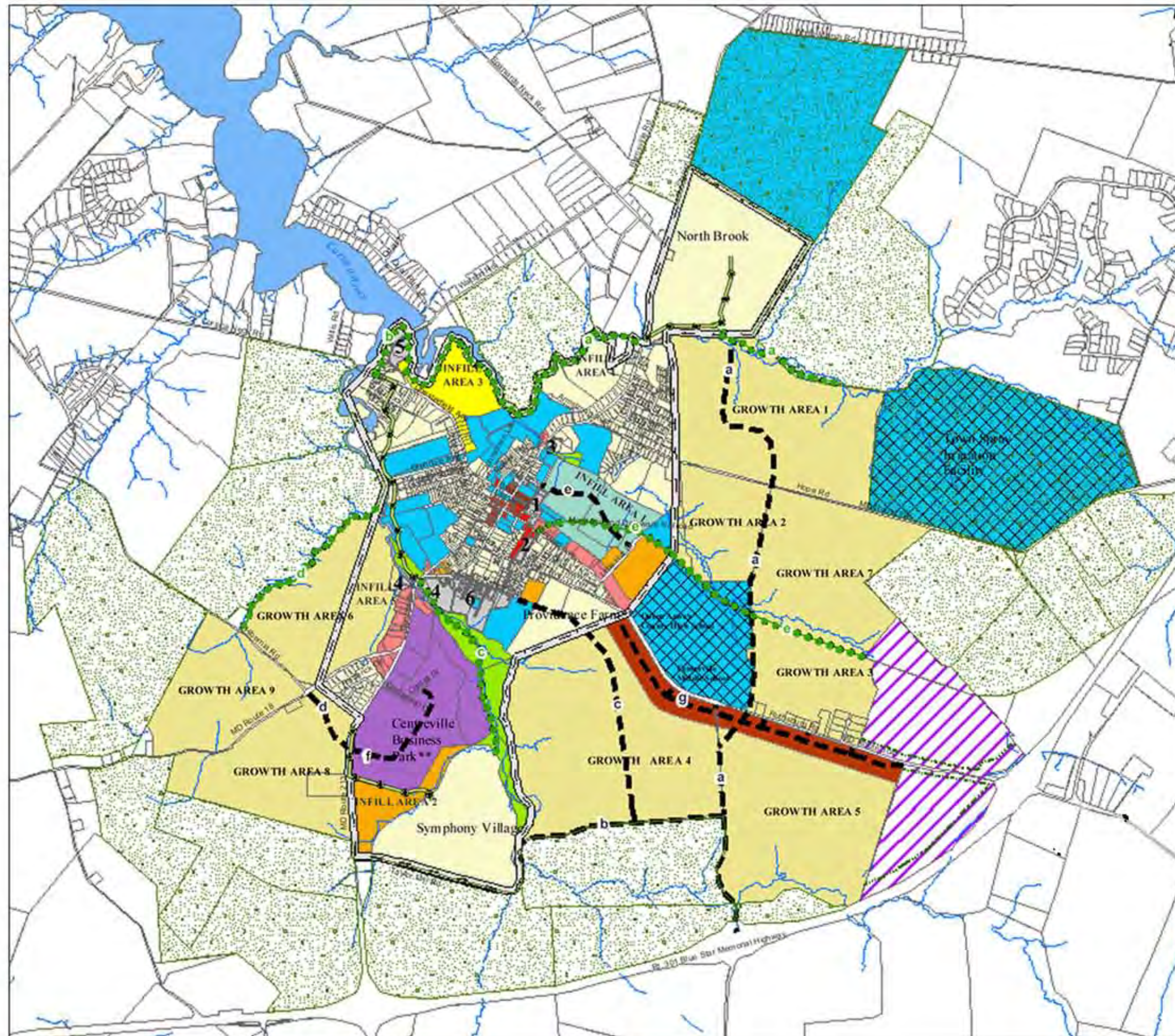
MARCH 2010



**PLANNED
TRANSPORTATION
IMPROVEMENTS**
CENTREVILLE

Legend

-  Town Limits
-  Parcels
-  Water
-  Streams
-  Other Potential Annexation Areas
-  Existing Greenway
-  Proposed Greenway*
-  Proposed Road*
-  Greenbelt
- Future Land Use**
 -  Single-Family Residential
 -  Traditional Neighborhood Development
 -  Planned Unit Development (PUD)
 -  Multi-Family Residential
 -  Central Business District
 -  Roadside Commercial
 -  Town Planned Business Park
 -  County Planned Business Park
 -  Public, Quasi-Public, Institutional
 -  Park, Open Space, Resource Protection Area
 -  Redevelopment Area***
 -  Mixed-Use Development
 -  Mixed-Use Corridor



SOURCE: CENTREVILLE COMMUNITY PLAN, 2009.

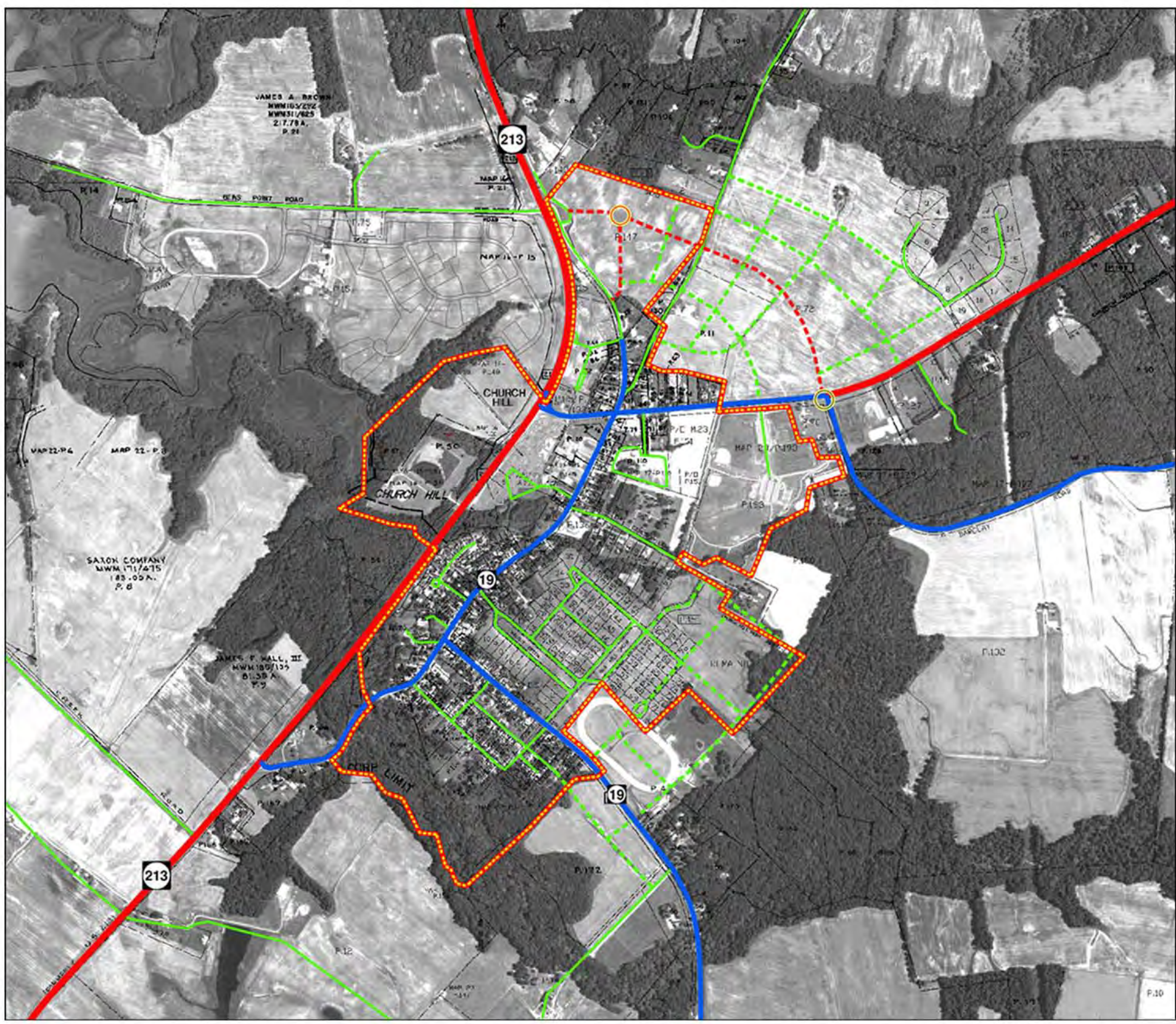
MARCH 2010



MARYLAND
**PLANNED
TRANSPORTATION
IMPROVEMENTS**
CHURCH HILL

Legend

- Town Boundary
- Arterial
- Collector
- Local Road
- New Arterial
- New Collector
- New Local Road
- Roundabout



SOURCE: CHURCH HILL COMPREHENSIVE PLAN,
2009, MAP 5









MARCH 2010



MARYLAND

**PLANNED
TRANSPORTATION
IMPROVEMENTS**
QUEENSTOWN*

Legend

-  Overpass
-  Full Intersection
-  J Intersection
-  U Turn
-  Right In / Right Out
-  Existing Major Road
-  Existing Minor Road
-  Proposed Minor Road
-  Proposed Trail
-  Planning Boundary
-  Town Boundary

*PER PENDING PLAN MARCH 2010



SOURCE: QUEENSTOWN COMMUNITY PLAN, 2010.

MARCH 2010



MAP T-4C

MARYLAND

**PLANNED
TRANSPORTATION
IMPROVEMENTS**
SUDLERSVILLE*

Legend

- Growth Area Parcels
- Growth Area Boundary
- Incorporated Towns
- Loop Designation**
 - Near Loop
 - Far and Outside Loop
- N Potential Road
- Conservation Lands**
 - County Park
 - Greenprint
 - MALPF Easement
 - Non Contiguous Development Open Space
 - Deed Restricted Open Space
 - Transfer of Development Rights
 - MALPF District

*PER PENDING PLAN MARCH 2010

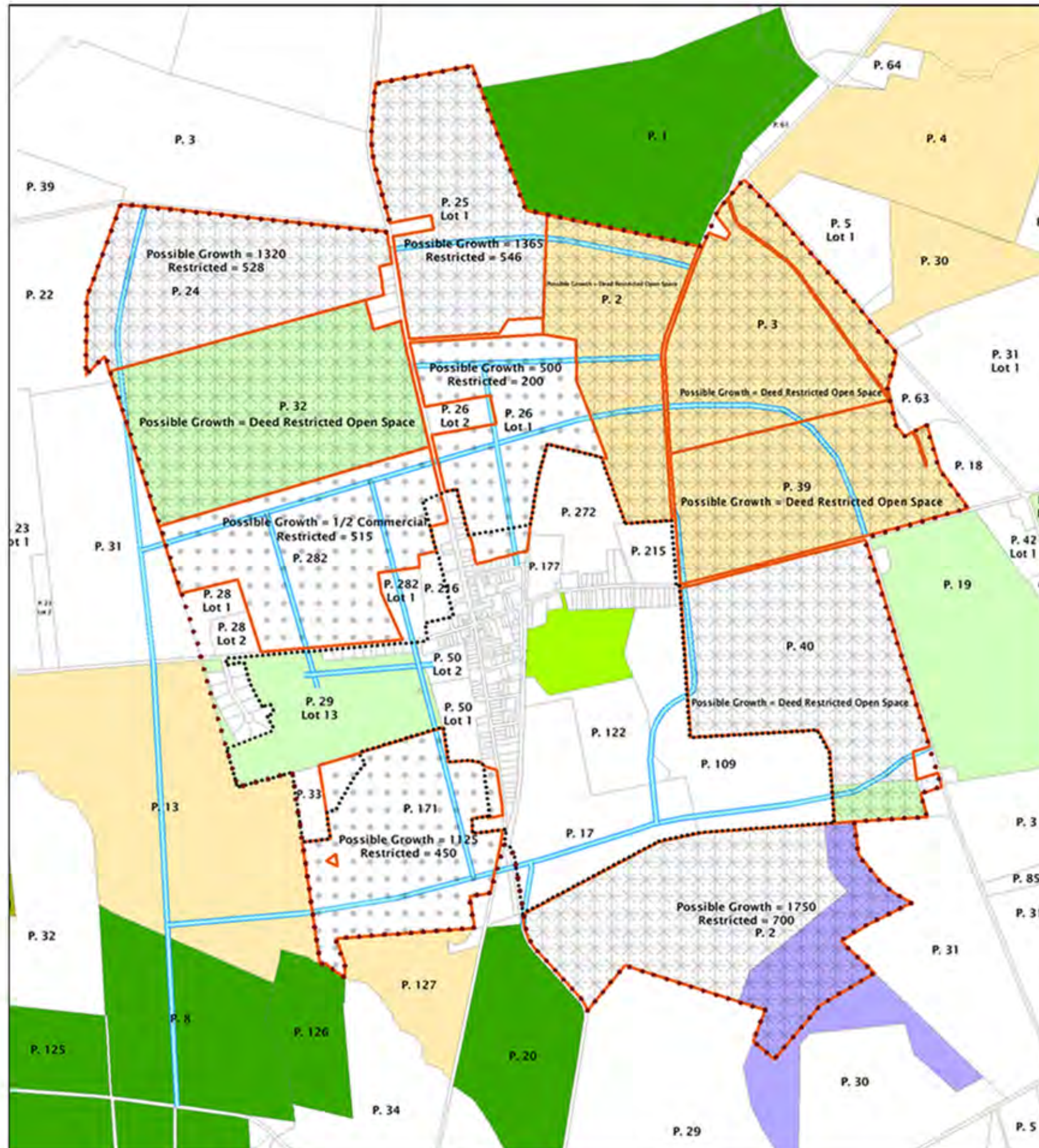


SOURCE: SUDLERSVILLE COMPREHENSIVE PLAN, 2003.

MARCH 2010



MAP T-4D



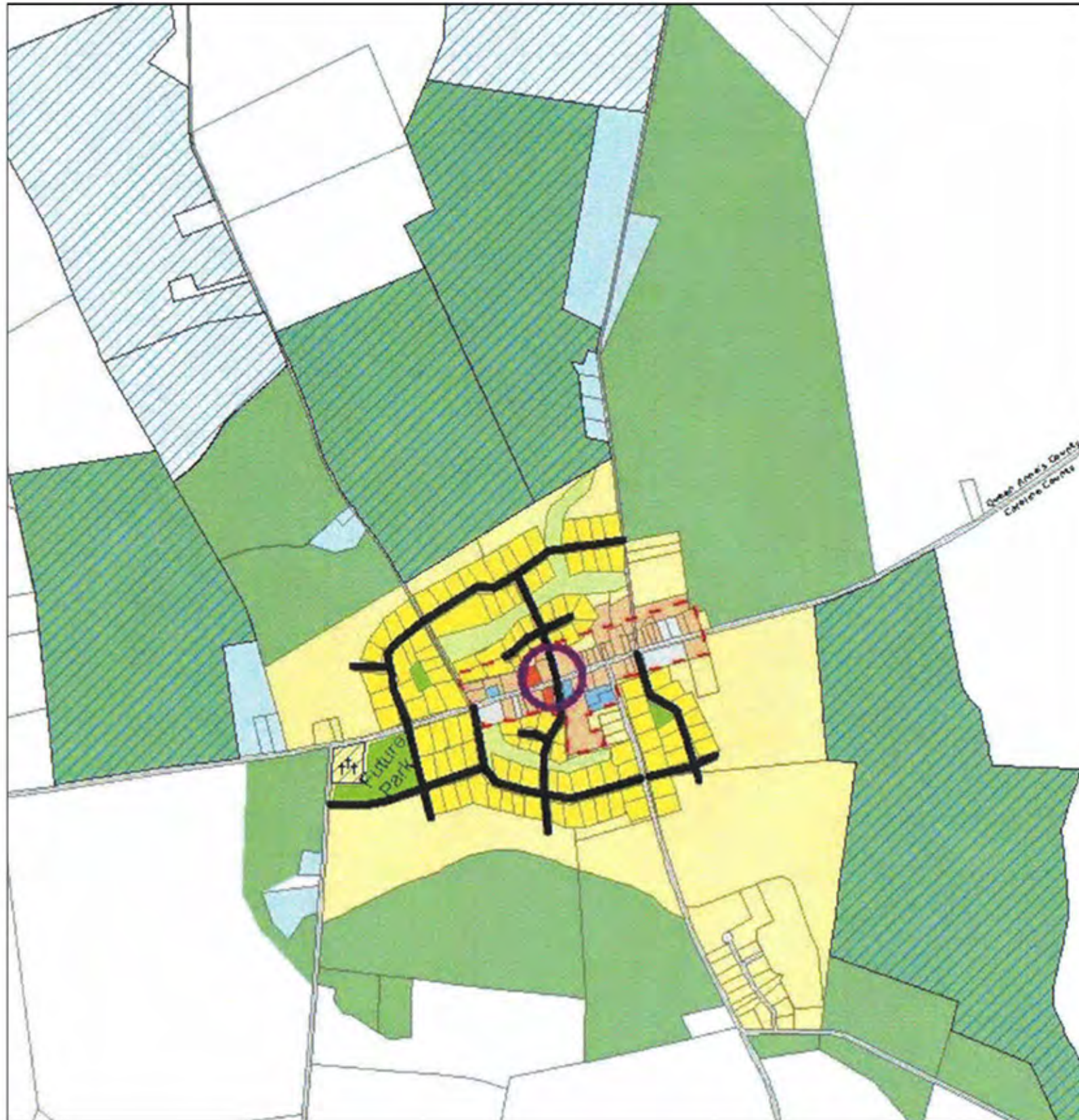
MARYLAND

**PLANNED
TRANSPORTATION
IMPROVEMENTS**
TEMPLEVILLE*

Legend

-  Future Town Center
-  Future Local Road
-  Conservation Lands
-  Existing Town Limits
-  Open Space and Parkland
-  Town Expansion Area - Short Term
-  Conservation Corridor
-  Neighborhood Conservation
-  Neighborhood Commercial
-  Neighborhood Exempt
-  Neighborhood Non-Developed
-  Town Expansion Area
-  Rural Residential
-  Greenbelt

*PER PENDING PLAN MARCH 2010



SOURCE: TEMPLEVILLE COMPREHENSIVE PLAN,
2007.

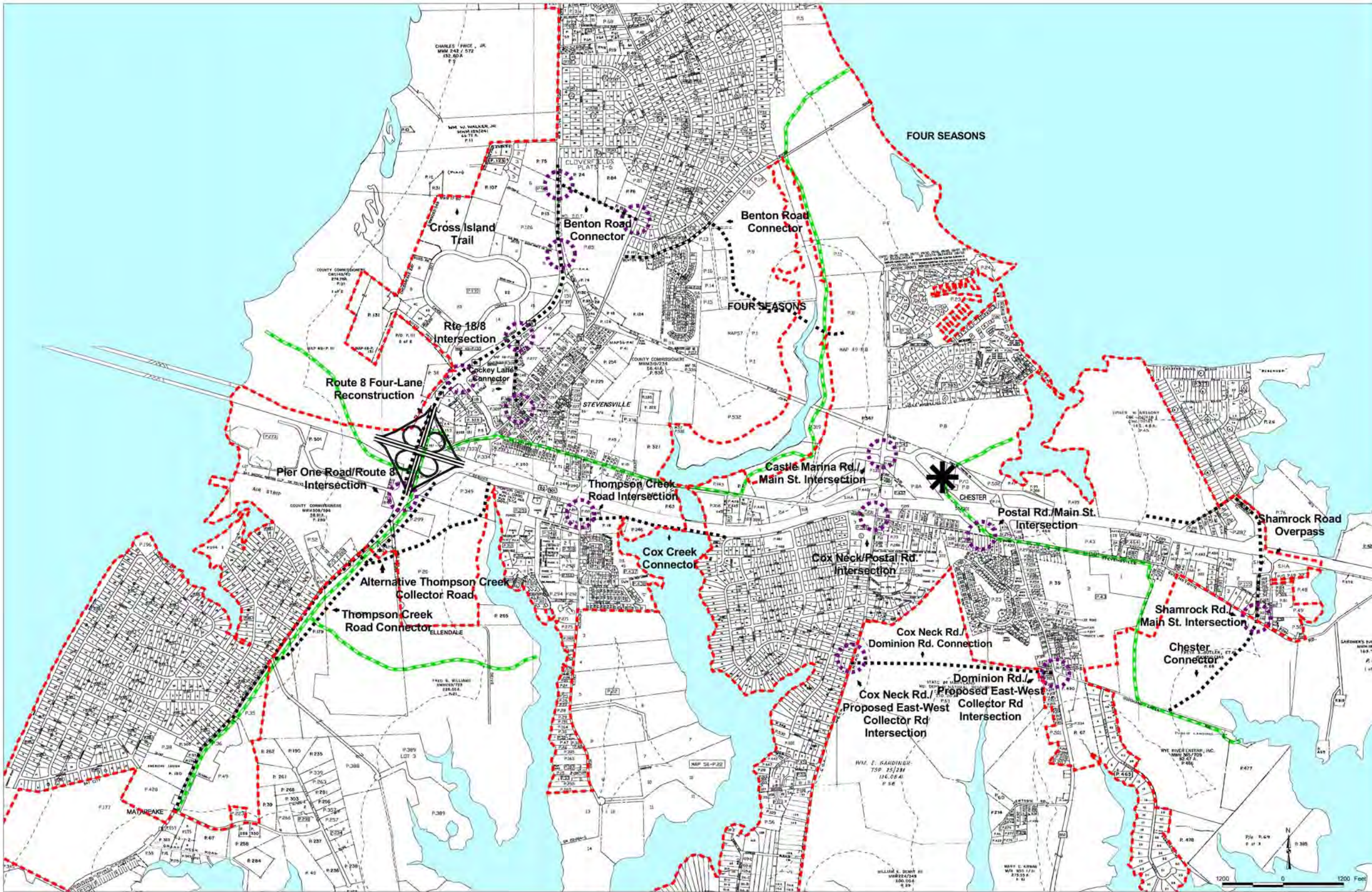
MARCH 2010



MARYLAND
**PLANNED
TRANSPORTATION
IMPROVEMENTS**
CHESTER - STEVENSVILLE

Legend

- Road Improvements
- ⊙ Intersection Improvements
- ⬠ Cloverleaf
- ✱ Ramp Improvement
- Pedestrian System Improvements



SOURCE: CHESTER / STEVENSVILLE COMMUNITY
PLAN, 2007.

MARCH 2010



MARYLAND
**PLANNED
TRANSPORTATION
IMPROVEMENTS**
KENT NARROWS

Legend

- Existing Buildings
- Proposed Buildings
- Growth Area
- Future Growth Area
- Cross Island Trail/ Existing Pedestrian Network
- Proposed Expansion of Cross Island Trail/ Pedestrian Network
- Proposed Boardwalk Connections
- Gateway*
- Secondary Gateway
- Channel Gateway**
- Gateway with Lighthouse
- Water Taxi
- Information Centers



SOURCE: KENT NARROWS COMMUNITY PLAN, 2006.

MARCH 2010



COMPREHENSIVE PLAN UPDATE

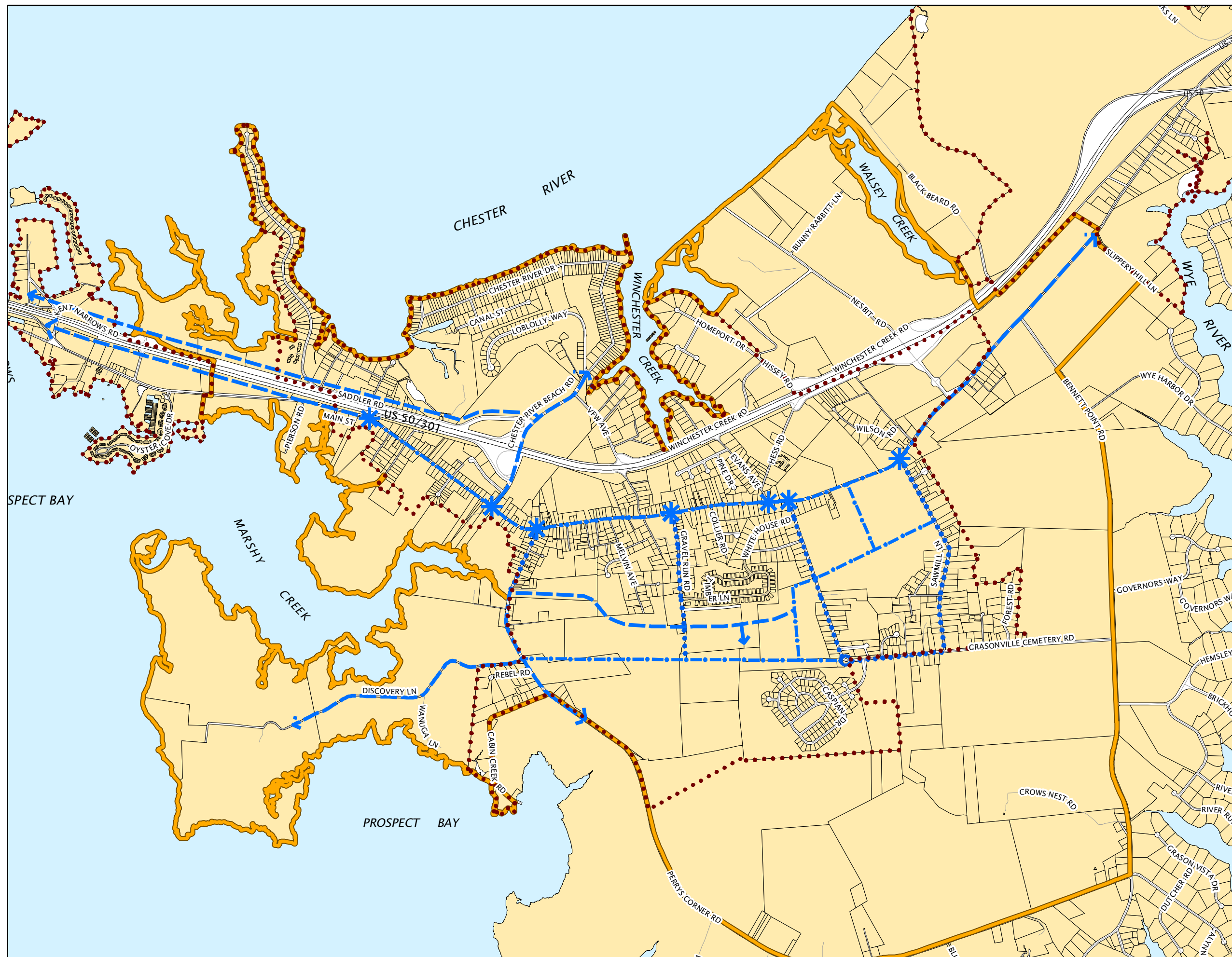
PLANNED TRANSPORTATION IMPROVEMENTS *GRASONVILLE* *

- Sidewalk
- Pedestrian / Bicycle Trail
- Road Improvement with Sidewalk
- Intersection Improvement
- Proposed Roundabout
- County/Town Planning Areas
- Study Area
- Parcels
- County Boundary

A horizontal number line with tick marks at 0, 1,800, and 3,600. The word "Feet" is written at the right end of the line.



MAP T-4H

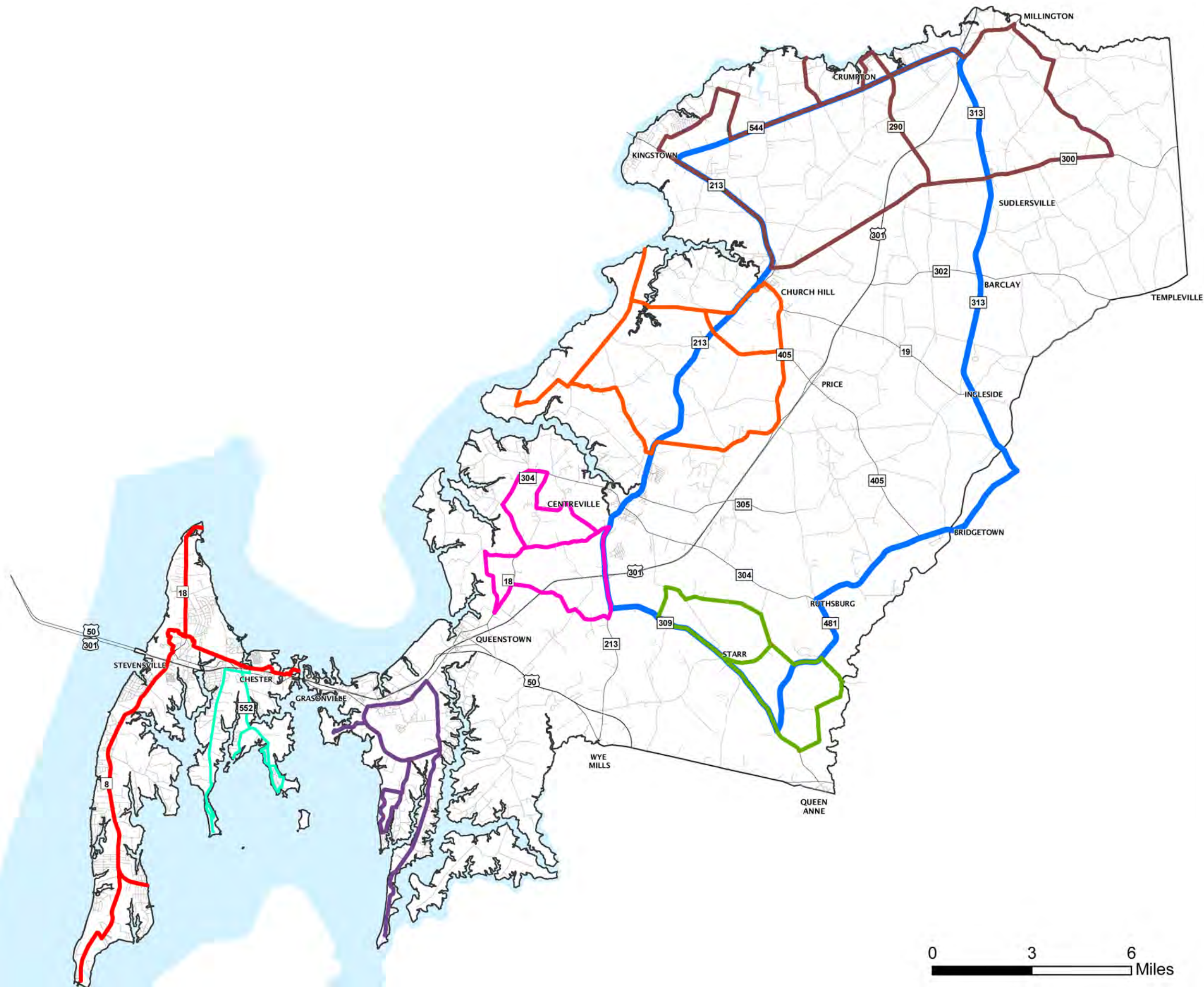


MARYLAND

**QUEEN ANNE'S COUNTY
PLANNED
BICYCLE ROUTES**

- Bicycle Routes***
-  Kent Island Bike Trails
 -  Quiet Kent
 -  Grasonville Flatlands
 -  Centreville Central
 -  Tuckahoe and Farm Country
 -  Woods, Wildlife, Water
 -  Smooth Upcounty Riding
 -  The Monster
 -  water

* On-road designated bicycle routes



0 3 6 Miles



SOURCE: QUEEN ANNE'S COUNTY DEPARTMENT
OF LAND USE, GROWTH MANAGEMENT AND
ENVIRONMENT, PEDESTRIAN AND BICYCLE
COMMITTEE

APRIL 2010



MAP T-5