



COMPREHENSIVE PLAN UPDATE 2021

QUEEN ANNE'S COUNTY, MARYLAND

PRESENTATION TO
BOARD OF
COUNTY
COMMISSIONERS

AUGUST 11, 2020
STATUS
UPDATE



INTRODUCTION

WALLACE MONTGOMERY, LLP

is a collection of over 240 passionate professionals with expertise in disciplines that converge to best impact change and make places better for people.



**INTEGRITY.
QUALITY.
TEAMWORK.
RESPECT.**

- ✓ Asset Management
- ✓ Aerial Photogrammetry
- ✓ Bike & Pedestrian Planning & Design
- ✓ Bridge Engineering
- ✓ Comprehensive & Transportation Planning
- ✓ Construction Management
- ✓ Design-Build
- ✓ Environmental Planning & Engineering
- ✓ Geographic Information Systems
- ✓ Highway Design
- ✓ Noise & Vibration Analysis
- ✓ Park & Trail Planning & Design
- ✓ Plats & Survey Development
- ✓ Site & Building Design
- ✓ Traffic Analysis & Engineering
- ✓ Transit Planning & Design
- ✓ Utility Planning & Engineering
- ✓ Water Resources

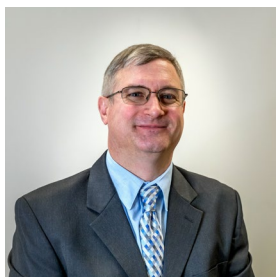


INTRODUCTION

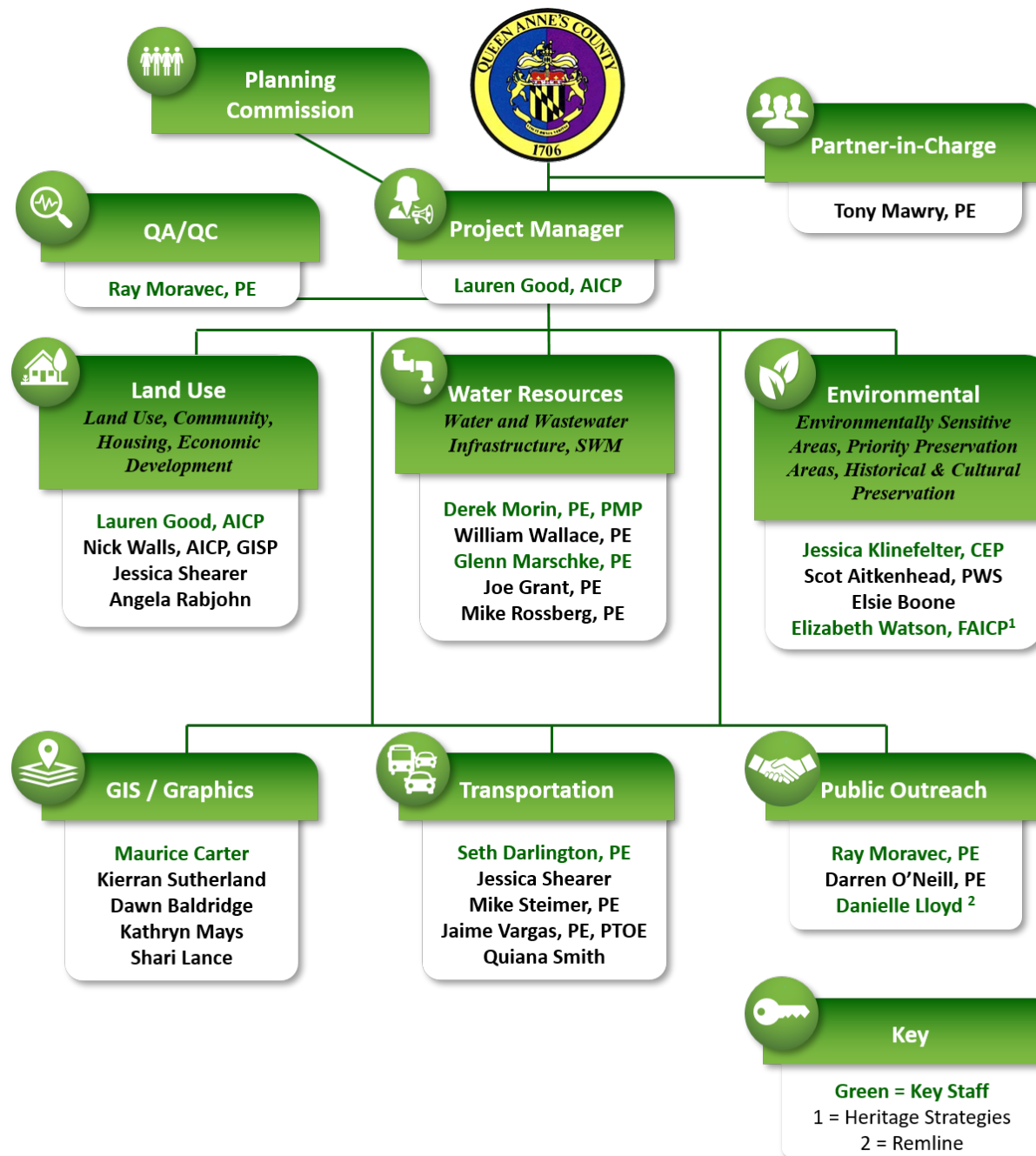
PROJECT TEAM



LAUREN GOOD, AICP
PROJECT MANAGER



RAY MORAVEC, PE
VICE PRESIDENT

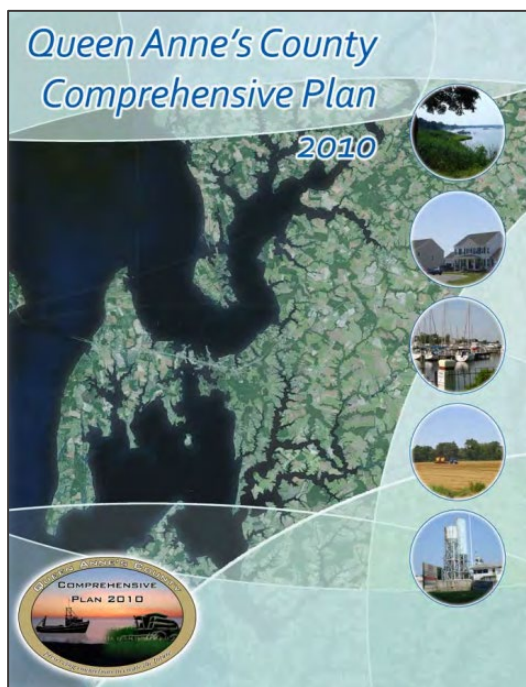




REVIEW

VISION

COMPREHENSIVE PLAN 2010



ADOPTED
SEPTEMBER 7, 2010

CONTINUE THE ETHIC THAT THE COUNTY REMAINS A **QUINTESSENTIAL RURAL COMMUNITY** WITH THE OVERALL CHARACTER OF THE COUNTY PRESERVED AS:

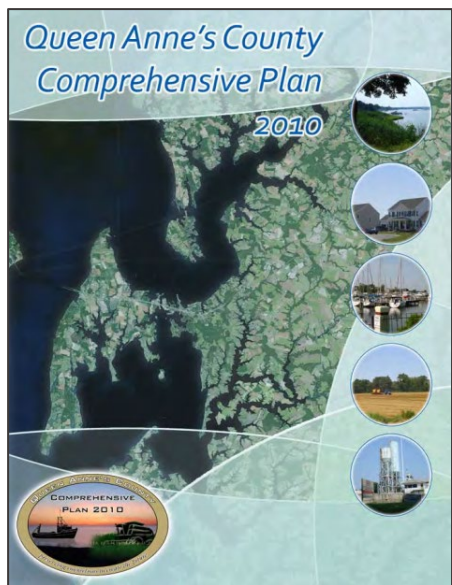
- A great place to live
- A good place to work
- A good neighbor for the Bay and other Eastern Shore counties
- A community that protects the expectations and opportunities of all its citizens
- A County that supports the highest quality of education



REVIEW

GUIDING PRINCIPLES

COMPREHENSIVE PLAN 2010



ADOPTED
SEPTEMBER 7, 2010

SUSTAIN THE COUNTY:

- As a predominantly agricultural community
- As good stewards preserving and protecting the Chesapeake Bay and its tributaries
- By reducing the growth in the number of new dwelling units in agricultural and rural areas
- By improving the overall quality of housing stock
- By addressing the relative lack of affordable housing
- By providing adequate public services through aspects of community planning addressing land use, transportation, infrastructure, and community design
- By encouraging and directing growth to existing communities and within designated planning areas



REVIEW

CHESTER/ STEVENSVILLE COMMUNITY PLAN 2007



Chester / Stevensville Community Plan

Adopted by
Queen Anne's County Commissioners
May 1, 2007

Queen Anne's County
Department of Planning and Zoning
Centreville, Maryland

ADOPTED
MAY 1, 2007

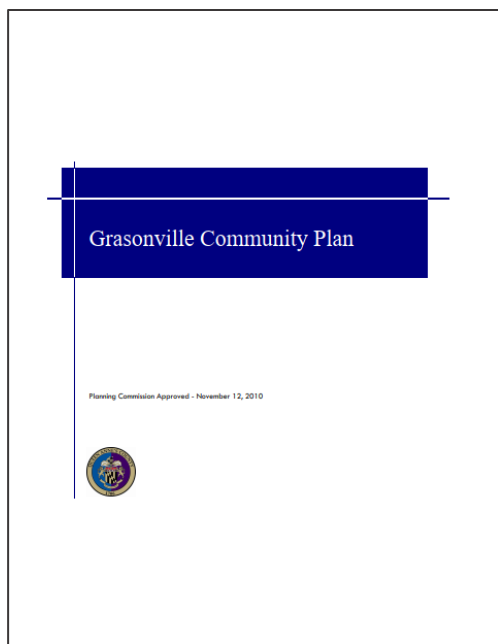
THE **VISION** FOR THE CHESTER/STEVENSVILLE Planning Area is to provide that families of all income levels are able to obtain secure **affordable housing**, maintain decent **employment**, have useful and safe **transportation** modes, select from a variety of community **parks**, **recreation**, and **educational opportunities**, and maintain the **environmental health** of their neighborhoods.



REVIEW

GRASONVILLE

COMMUNITY PLAN 2010



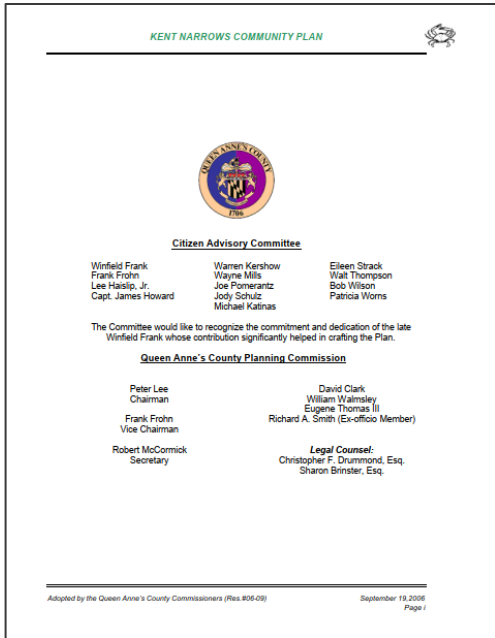
APPROVED
NOVEMBER 12, 2010

THE PLAN'S **INTENT** IS TO PUT FORTH A strategy for **responsible growth** that recognizes the **character** of the area and the needs of its citizens, now and in the future. Its underlying premise is that with forward thinking and community involvement, the **quality of life** for Grasonville's citizens can be enhanced while accommodating the area's **growth and development**.



REVIEW

KENT NARROWS COMMUNITY PLAN 2006



ADOPTED
SEPTEMBER 19, 2006

THE SHARED COMMUNITY **VISION** HOPES TO establish Kent Narrows as a **year-round destination** for visitors and local residents while highlighting the **heritage** of the traditional **working waterfront** character.



QAC-PLAN-2021

WM WORK TO DATE

- Held internal project kick-off meeting
- Developed detailed work plan
- Updated initial project schedule
- Prepared draft public involvement plan
- Reviewed prior work efforts
- Continued data collection
- Began Plan organization
- Held staff coordination meeting
- Initiated contact with the QACTV and Community Affairs Departments
- Held County Commissioner status update meeting



QAC-PLAN-2021

PRIOR WORK EFFORTS

REVIEWED COUNTY-PROVIDED PRIOR WORK EFFORTS:

- Working drafts of element data
- Working drafts of element sections
- Working drafts of community plan updates
- Meeting/workshop presentations & minutes/notes
 - Planning Commission (02/2020)
 - Stevensville/Chester Public Workshop (02/2020)
 - Council of Governments (11/2019)
 - Technical Committee (12/2019)
 - Staff Coordination (10/2019, 12/2019, 02/2020)
- Public survey results
- Goals, objectives, and recommendations status update



QAC-PLAN-2021

WORK PLAN OVERVIEW

TASK 1 PROJECT INITIATION ↩

- 1.1 Detailed Scope & Schedule ✓
- 1.2 Develop Public Engagement Plan ↩
- 1.3 Project Initiation Meeting ✓

TASK 2 CONDITIONS ANALYSIS & INPUT ↩

- 2.1 Collect Data & Analyze Existing Conditions ↩
- 2.2 Public Engagement
- 2.3 Evaluate Existing County Vision Statement
- 2.4 Issues & Opportunities Assessment

TASK 3 COMMUNITY ASSESSMENTS

- 3.1 Incorporated Jurisdiction Profiles
- 3.2 Community Plans

TASK 4 PLAN DEVELOPMENT

- 4.1 Comprehensive Plan Framework
- 4.2 Development of Draft Comprehensive Plan
- 4.3 Draft Implementation Elements
- 4.4 Draft Plan Presentation

TASK 5 COMPREHENSIVE PLAN ADOPTION

- 5.1 Comprehensive Plan Collateral
- 5.2 Planning Commission Public Hearing
- 5.3 Board of County Commissioners Public Hearing
- 5.4 Final Comprehensive Plan Document

TASK 6 PROJECT MANAGEMENT ↩

- 6.1 Coordination, Progress Reports & Schedule Updates ↩

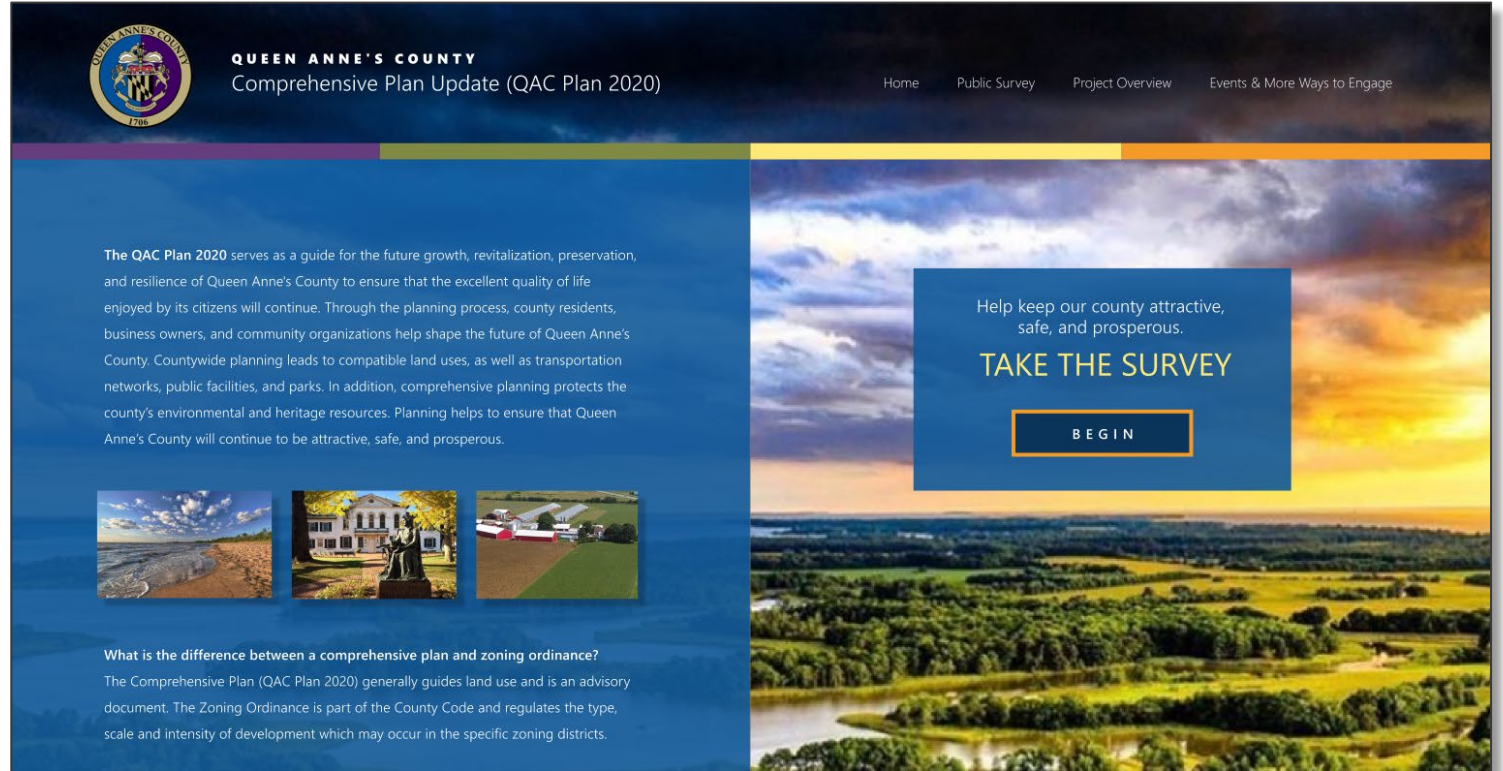


QAC-PLAN-2021

PUBLIC INVOLVEMENT PLAN

The PIP offers a systematic and strategic approach for reaching stakeholders and the general public. It includes:

- Initial stakeholder identification
- Methods of public outreach
- List of stakeholder and public meetings/workshops





QUESTIONS OR COMMENTS



Lauren Good

Wallace Montgomery | Project Manager

lgood@wallacemontgomery.com | 302.232.6965